

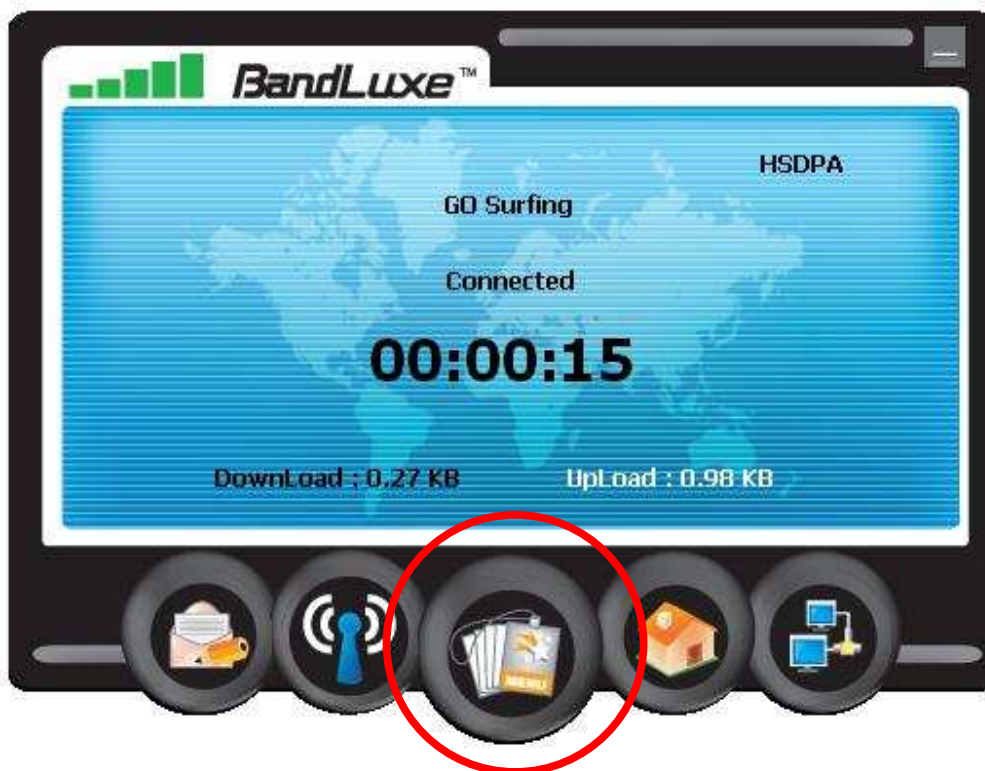
## Bandluxe

You can keep track of your data usage by using the Bandluxe data counter. Resetting the counter at the start of the month will enable you to keep track of your month's data usage.

### IMPORTANT NOTES

- This counter provides only an estimate since the Bandluxe does not round up the data usage above bundle (where applicable) as specified in your tariff plan.
- In order to arrive at your full data usage, you need to add both the uploads and the downloads together.
- If you use the Bandluxe on more than one computer, you will have a separate data count for each computer. Thus you need to add them all together to arrive at your full data usage.

### Keeping track of your data usage



Click on Menu

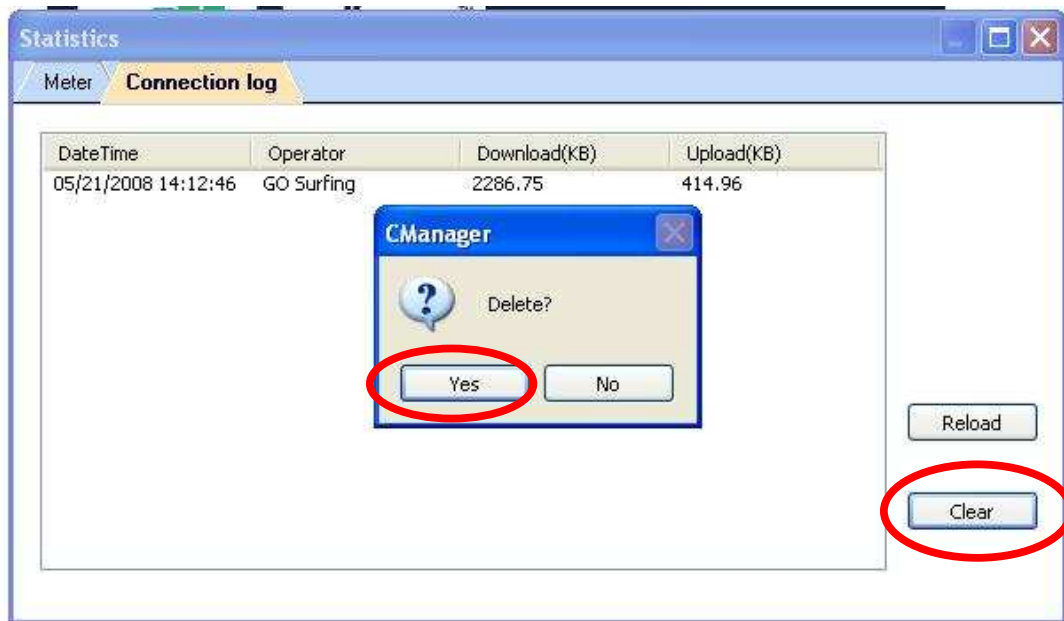


Click on Statistics

| DateTime            | Operator   | Download(KB) | Upload(KB) |
|---------------------|------------|--------------|------------|
| 05/21/2008 14:12:46 | GO Surfing | 2286.75      | 414.96     |

Click on Connection Log. Add the Downloads and Uploads together to arrive at your data usage

### Resetting the data counter to zero



In the Connection Log, click Clear, then click Yes