

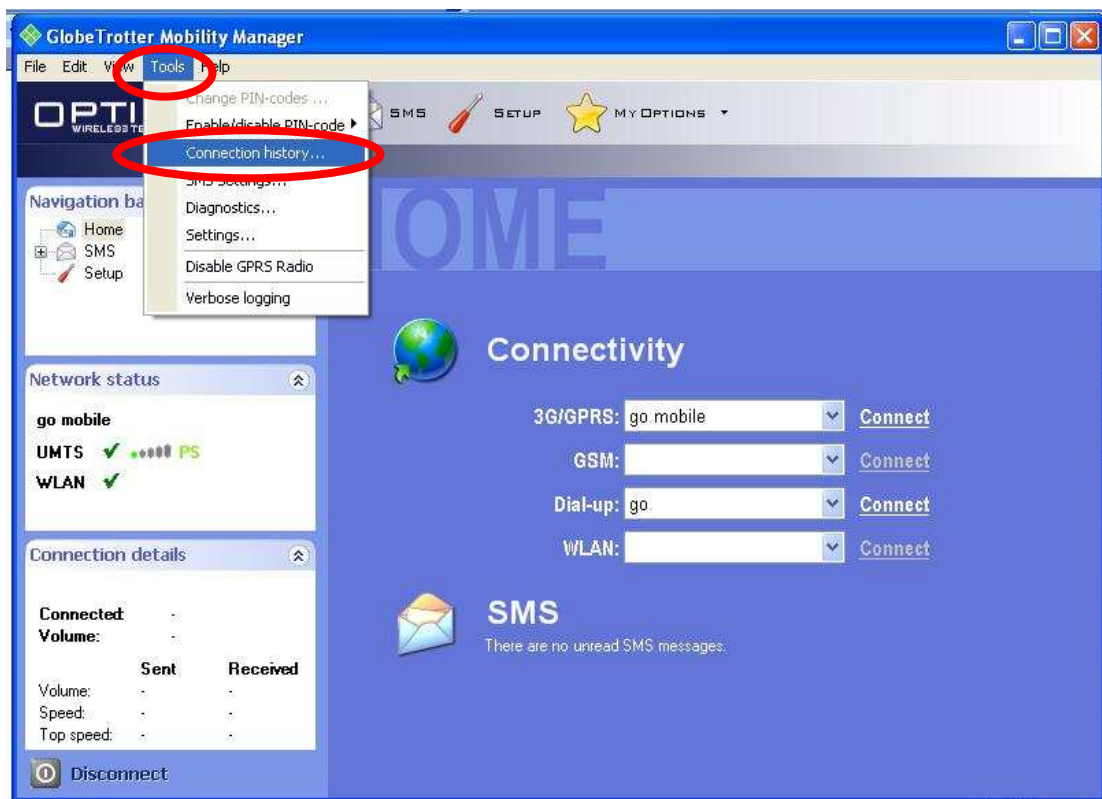
Globetrotter GT Max

You can keep track of your data usage by using the Globetrotter GT Max data counter. Resetting the counter at the start of the month will enable you to keep track of your month's data usage.

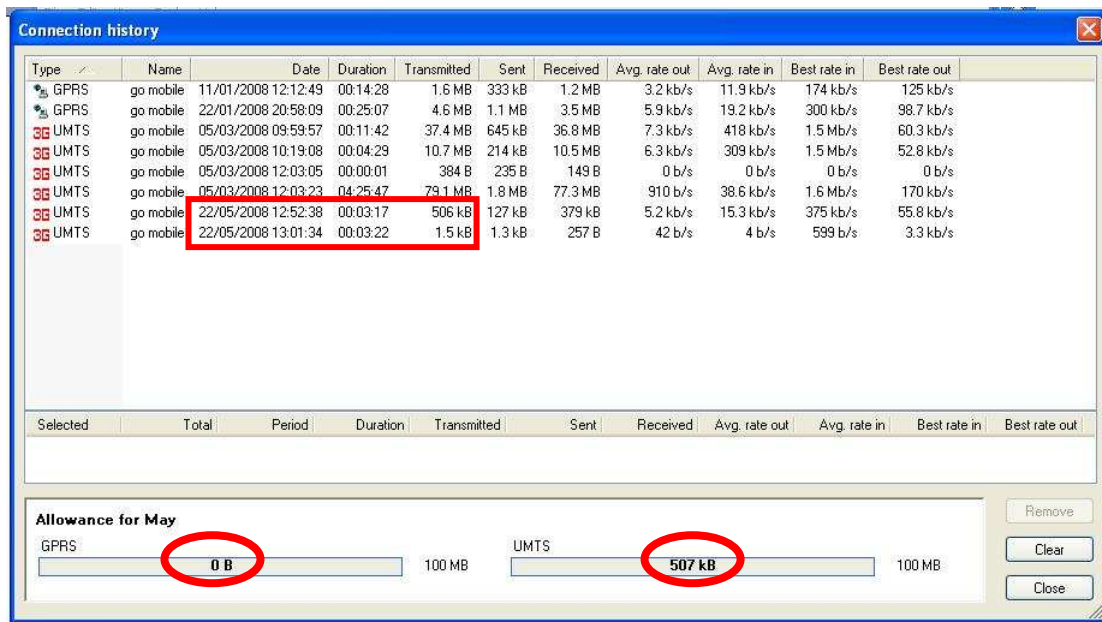
IMPORTANT NOTES

- This counter provides only an estimate since the Globetrotter GT Max does not round up the data usage above bundle (where applicable) as specified in your tariff plan.
- In order to arrive at your full data usage, you need to add the uploads and the downloads together.
- If you use the Globetrotter GT Max on more than one computer, you will have a separate data count for each computer. Thus you need to add them all together to arrive at your full data usage.

Keeping track of your data usage

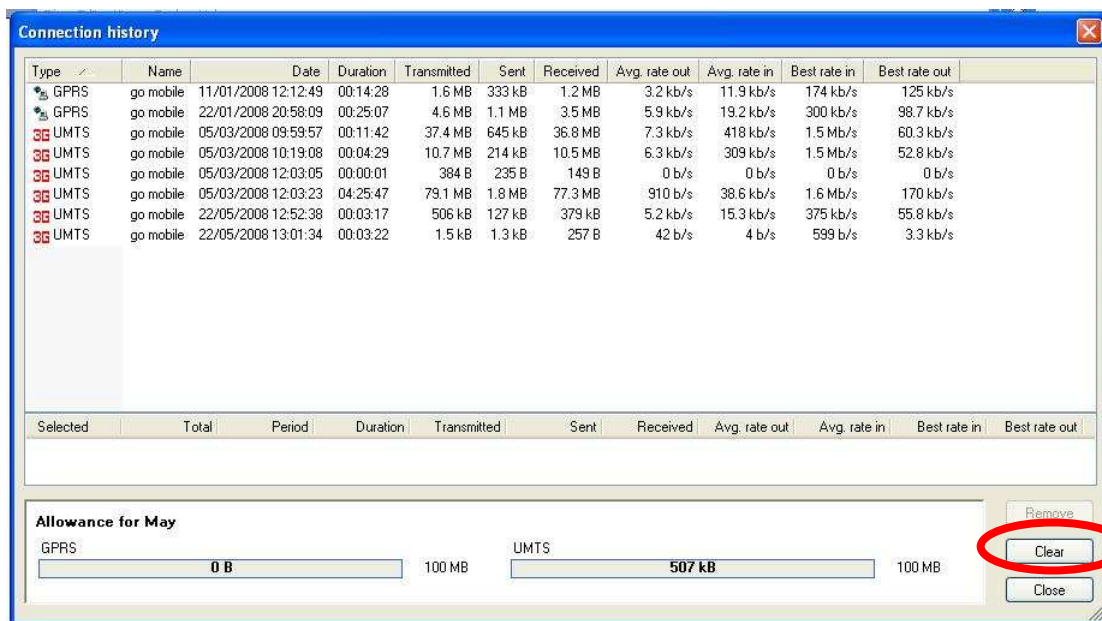


Click on Tools, then on Connection History



The data usage since the last reset is available at the bottom of the screen. You need to add the UMTS and GPRS usage together to arrive at the full amount. Alternatively, you may add the Transmitted data in the detailed history above

Resetting the data counter to zero



In the Connection History, click Clear. The counters will clear immediately, without any further prompting