

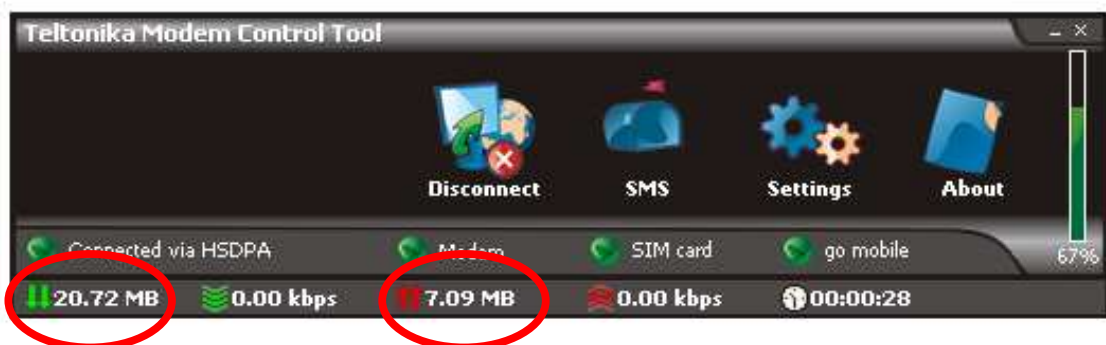
## Teltonika

You can keep track of your data usage by using the Teltonika data counter. Resetting the counter at the start of the month will enable you to keep track of your month's data usage.

### IMPORTANT NOTES

- This counter provides only an estimate since the Teltonika does not round up the data usage above bundle (where applicable) as specified in your tariff plan.
- In order to arrive at your full data usage, you need to add the uploads and the downloads together.
- If you use the Teltonika on more than one computer, you will have a separate data count for each computer. Thus you need to add them all together to arrive at your full data usage.

### Keeping track of your data usage

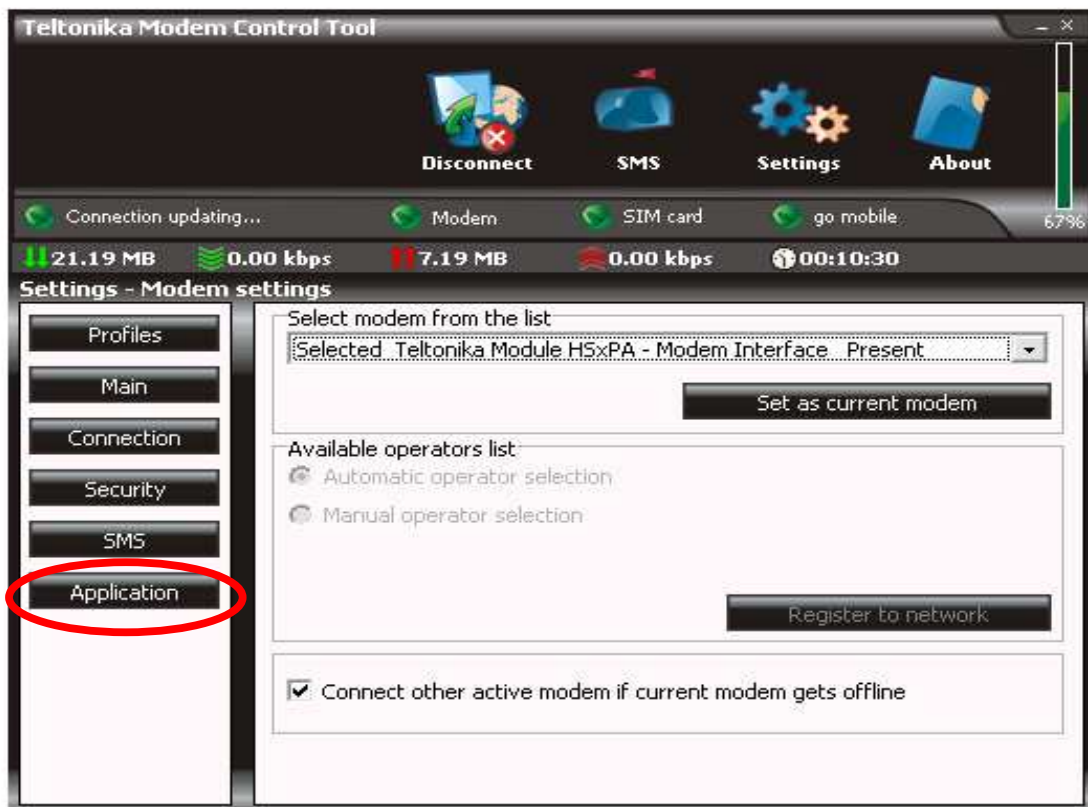


**Add the Downloads (denoted by the green arrows ↓↓) and the Uploads (denoted by the red arrows ↑↑) together to arrive at your data usage**

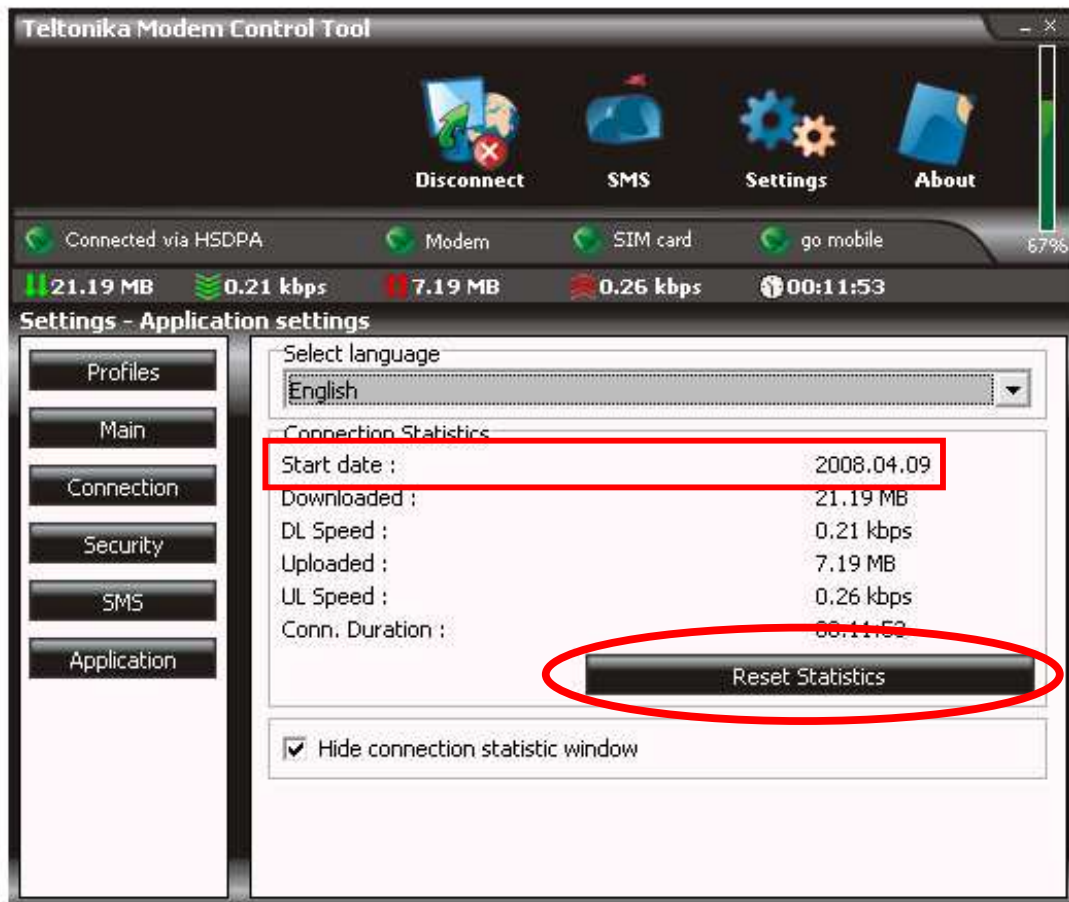
## Resetting the data counter to zero



Click on Settings



Click on Application



Click on Reset Statistics to reset the counters to zero. The Start Date shows the date when the counter was last reset, or, if it was never reset, the date when the service started being used.